

rubber + vinyl complementary Accessories

TILE / TREAD / WALL BASE /
ACCESSORIES / ARTISAN BASE

rubber+vinyl



Procedo Rubber Tiles & Treads

provide the long-term performance you expect when using rubber flooring. Rubber Flooring offers superior durability and ease of maintenance that most other flooring options cannot achieve.

Procedo Rubber Tiles are available in Round Disc, Square and Milled profiles in 24 solid colors, as well as 8 chip colors. The 8 chip colors are also available in a Smooth finish tile.

Procedo Rubber Treads provide the quality, durability, and ease of maintenance needed for your commercial stairwell areas.

Treads complement our rubber tiles with Smooth, Round Disc, Square and Milled texture options and with a 7" coordinating riser. You also have the ability to add a 2" abrasive strip to provide a tactile and visual warning strip if required.

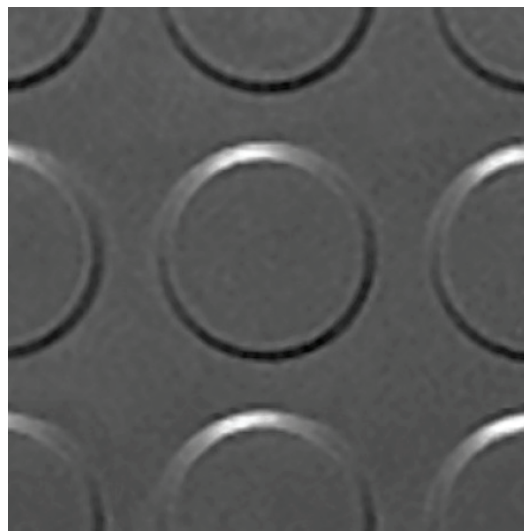
Install Procedo Rubber Tiles & Treads with the recommended Excelsior™ adhesive to get the best performance possible.

Please refer to procedoflooring.com for detailed installation and maintenance instructions.

Rubber TILE & TREAD

RUBBER TILE PROFILES

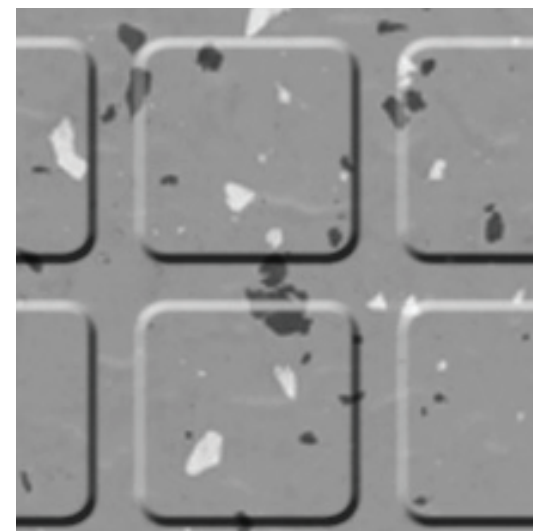
Round Disc, Square and Milled available in all 24 solid and 8 chip colors. Smooth in 8 chip colors only.



ROUND DISC

Rubber Tile Specs

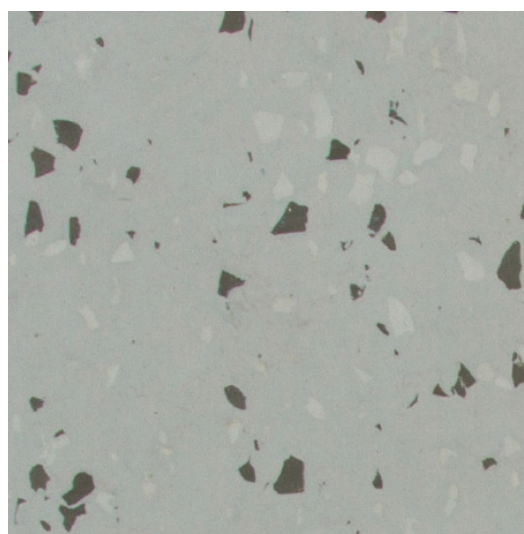
Gauge: 1/8"
Sizes: 18" x 18"
Pcs/Ctn: 20
SF/Ctn: 45



1/8" SQUARE

Rubber Tile Specs

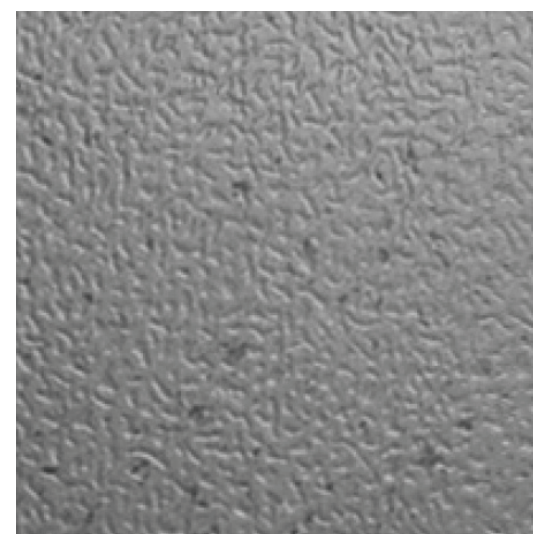
Gauge: 1/8"
Sizes: 18" x 18"
Pcs/Ctn: 20
SF/Ctn: 45



SMOOTH (Available in 8 chip colors only.)

Rubber Tile Specs

Gauge: 1/8"
Sizes: 18" x 18"
Pcs/Ctn: 20
SF/Ctn: 45



MILLED

Rubber Tile Specs

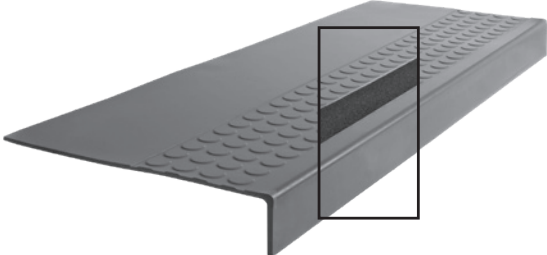
Gauge: 1/8"
Sizes: 18" x 18"
Pcs/Ctn: 20
SF/Ctn: 45

RUBBER TREAD PROFILES

Available in all 24 solid and 8 chip colors.

1/8" ROUND DISC

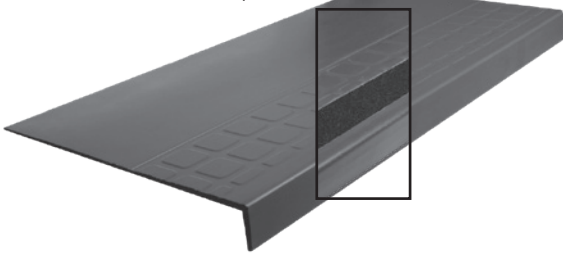
With or w/o Abrasive strip



Depth: 12"
Lengths: 36", 42", 48", 54", 60",
66", 72", 84", 96", 108"

1/8" SQUARE

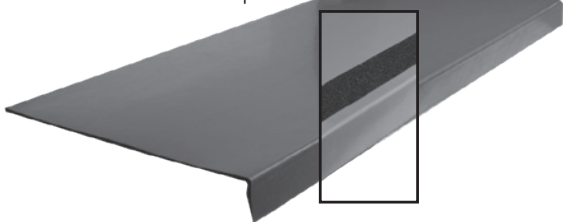
With or w/o Abrasive strip



Depth: 12-1/4"
Lengths: 36", 42", 48", 54",
60", 66", 72"

1/8" SMOOTH

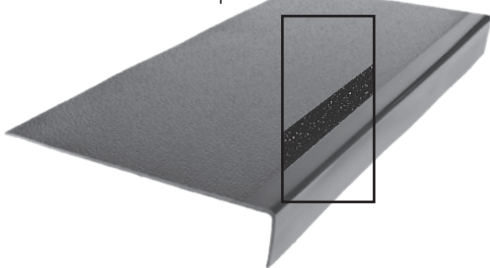
With or w/o Abrasive strip



Depth: 12-1/4"
Lengths: 36", 42", 48", 54",
60", 66", 72"

1/8" MILLED

With or w/o Abrasive strip



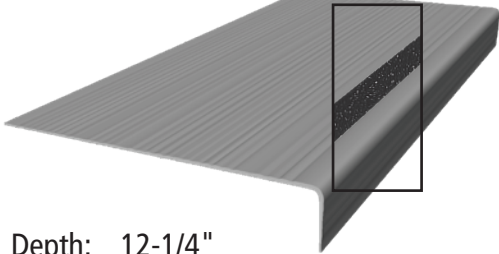
Depth: 12-1/2"
Lengths: 36", 42", 48", 54", 60", 66", 72",
78", 84", 90", 96", 102", 108"

VINYL TREAD PROFILES

Available in 34N Black Hole, 60N Brown Bay, 61N Rocky Ridge and 62N Crumb Beige

LIGHT DUTY

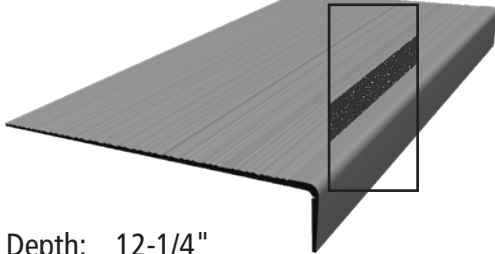
With or w/o Abrasive strip



Depth: 12-1/4"
Lengths: 42", 48", 72"

HEAVY DUTY

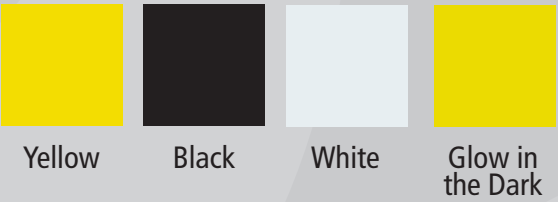
With or w/o Abrasive strip



Depth: 12-1/4"
Lengths: 42", 48", 72"

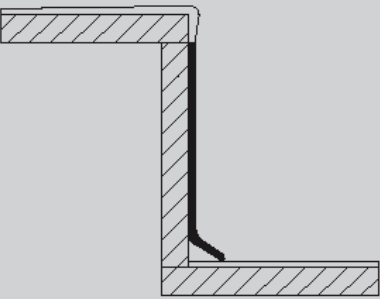


ABRASIVE STRIP COLORS



Color selections must be made from actual samples.

RUBBER + VINYL RISERS



Rubber Risers Specs

Height: 7"
Lengths: 36", 42", 48",
54", 60", 66",
72", 84", 96",
108"

Vinyl Risers Specs

Height: 7"
Lengths: 50' rolls



Procedo Wall Base provides 24 colors in Rubber, Type TP resilient rubber-vinyl blend and Vinyl Wall Base options that will coordinate with any hard surface, carpet or natural stone flooring that is selected.

Select our **Rubber Wall Base** when durability and long-term performance is the key to your project.

Vinyl Wall Base provides an economical alternative when meeting a budget is paramount.

Select from three heights – 2-1/2", 4", or 6" – and from Cove or Straight options to find the perfect accent and wall protection for your installation.

Artisan Base offers a variety of sculptured profiles in Type TP resilient rubber-vinyl blend in heights from 3" to 6". Get creative flexibility in design, as well as installation flexibility for curved or irregular surfaces.



RUBBER & VINYL WALL BASE



2-1/2" – Cove
(Also Available as Straight)



All Heights Available in
4' Lengths and 120' Coils

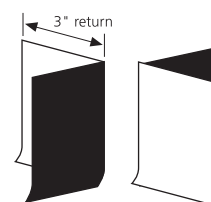
Rubber Thickness: 1/8"
Vinyl Thickness: .080", 1/8"

4" – Cove
(Also Available as Straight)



6" – Cove
(Also Available as Straight)

Inside and Outside Corners
available, Cove or Straight
(6" corners available in
outside cove only)



ACCESSORIES

Visit procedoflooring.com for complete specs.



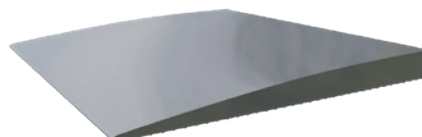
PRO710 3/32" Reducer
Available in 12' lengths.



PRO711 1/8" Carpet/Tile Joiner
Available in 12' lengths.



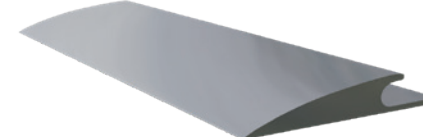
PRO713 3/16" Tile Transition
Available in 12' lengths.



PRO712 11/32" Reducer
Available in 40' lengths.



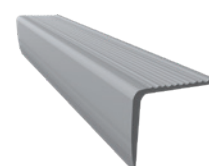
PRO718 1/8" Tile
Reducer Strip
Available in 3' lengths.



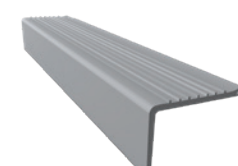
PRO714 3/16" Carpet Edge Guard
Available in 12' lengths.



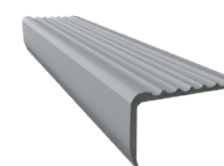
PRO719 3/8" Carpet
Edge Reducer
Available in 12' lengths.



PRO715 1/8" Top Step
Stair Nosing
Available in 12' lengths.



PRO716 1/8" Lap Type
Stair Nosing
Available in 12' lengths.



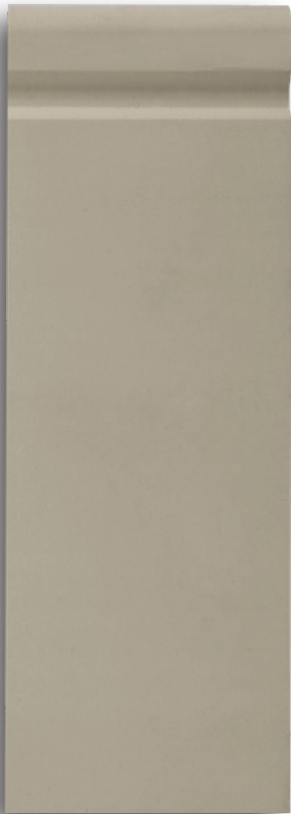
PRO717 1/8" Overlap
Stair Nosing
Available in 12' lengths.

ARTISAN BASE

Type TP Resilient Rubber-Vinyl Blend / 5-Carton Minimum



Bismark 4-1/2"
Gauge: 3/8"
40' rolls; 1 Pc/Ctn; 40 LF/Ctn



Synergy 4-1/4"
Gauge: 1/4"
8' pieces; 5 Pcs/Ctn; ; 40 LF/Ctn



Canyon 3"
Gauge: 3/8"
8' piece; 5 Pcs/Ctn; 40 LF/Ctn

RUBBER CORNER BLOCKS

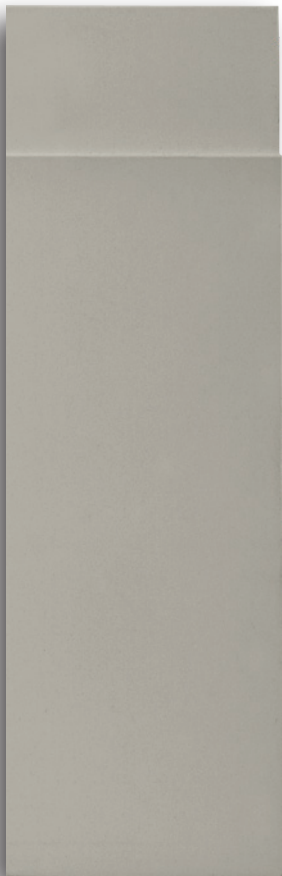
4 3/4", 8" Heights
15 Pcs/Ctn



Inside Corner



Outside Corner



Structure 4-1/2"
Gauge: 3/8"
8' pieces; 5 Pcs/Ctn; 40 LF/Ctn



Polaris 4-1/2"
Gauge: 3/8"
8' pieces; 5 Pcs/Ctn; 40 LF/Ctn



Decatur 4-5/8"
Gauge: 3/8"
8' pieces; 5 Pcs/Ctn; 40 LF/Ctn



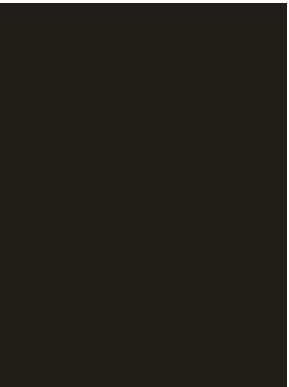
Tempest 5"
Gauge: 3/8"
8' pieces; 5 Pcs/Ctn; 40 LF/Ctn



Tungsten 6"
Gauge: 1/4"
8' pieces; 5 Pcs/Ctn; 40 LF/Ctn

SOLID COLORS

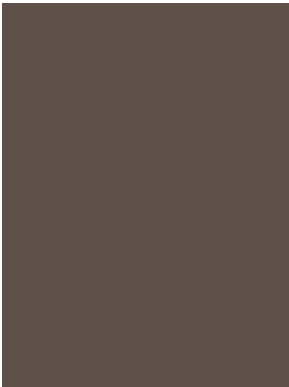
(TILE / TREAD / WALL BASE / ARTISAN BASE / ACCESSORIES)



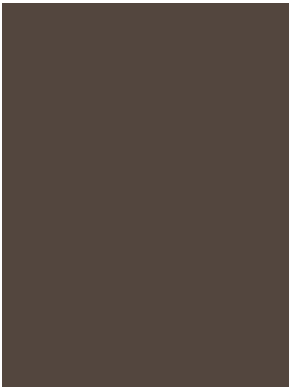
34N Black Hole



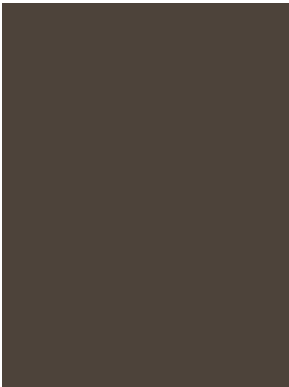
25N Regal Brown



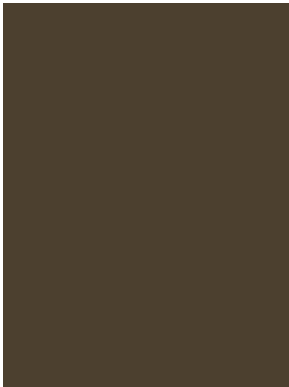
66N Volcanic Sand



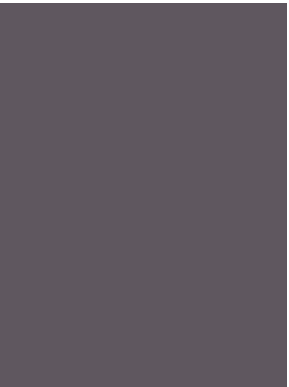
60N Brown Bay



64N Dark Coco



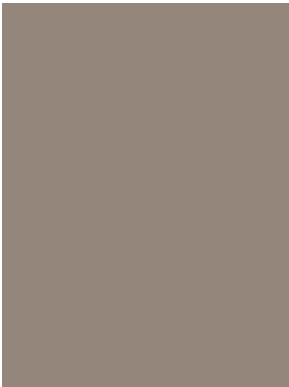
59N Plymouth Rock



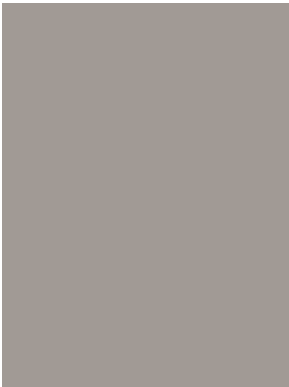
67N Dark Ash



70N Bullet Gray



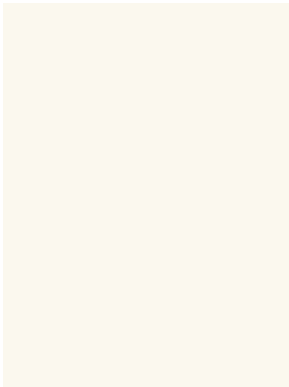
62N Crumb Beige



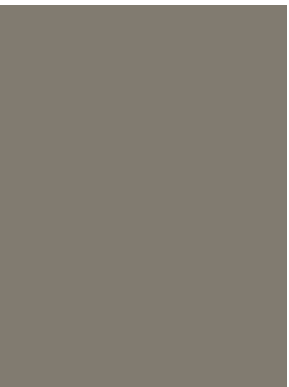
68N Frosty Gray



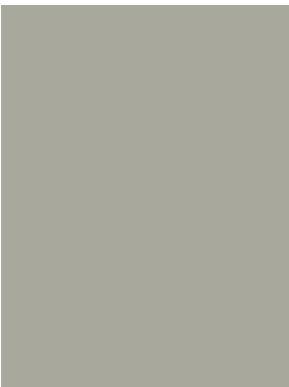
20N Winter White



63N Riviera White



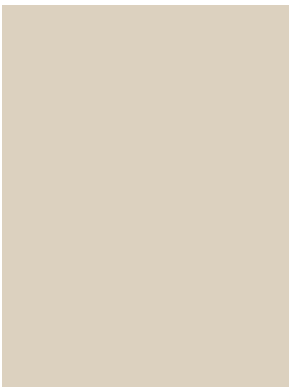
65N Quarry



48N Silver Dollar



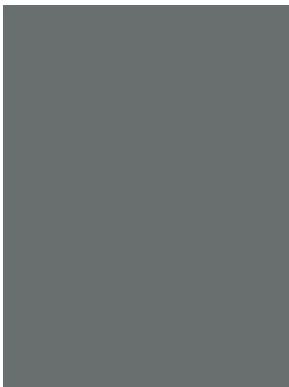
36N Beige Ridge



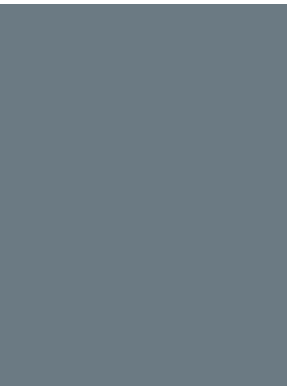
41N Warm Thread



61N Rocky Ridge



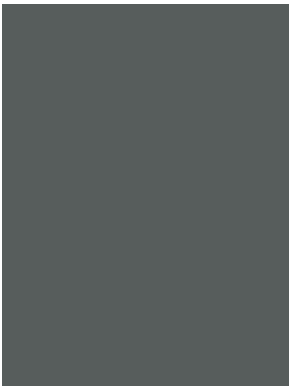
49N Pigeon



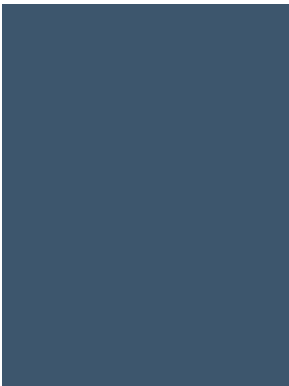
69N Smoothing Blue



71N Metal Hint



32N Weathered Wall



72N Matte Blue



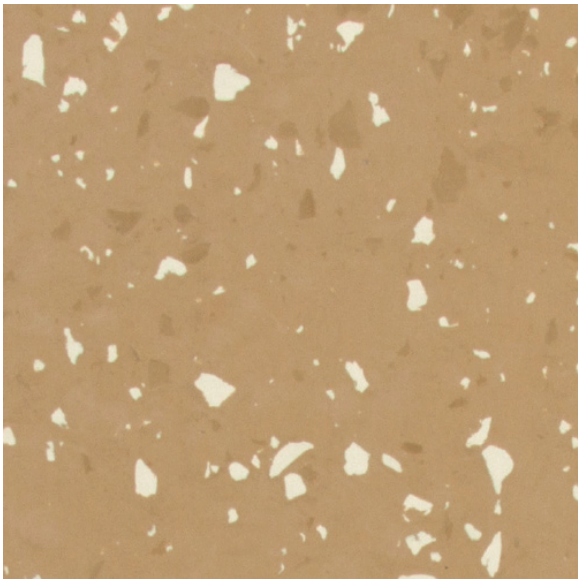
27N Deep Sage



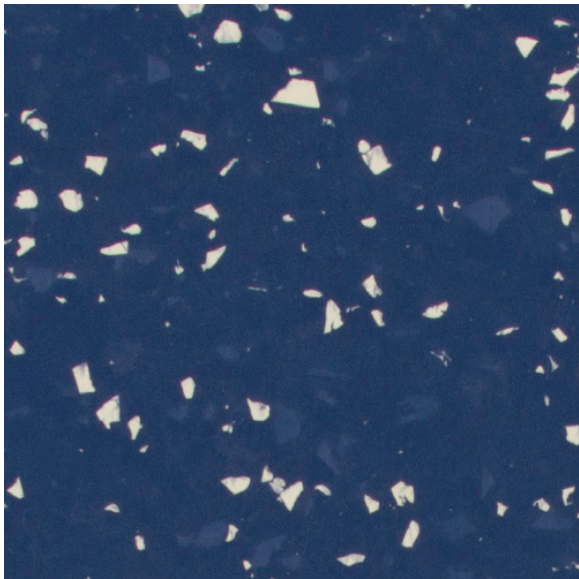
24N Ember

Custom colors also available. Contact your Procedeo representative for minimum quantities.

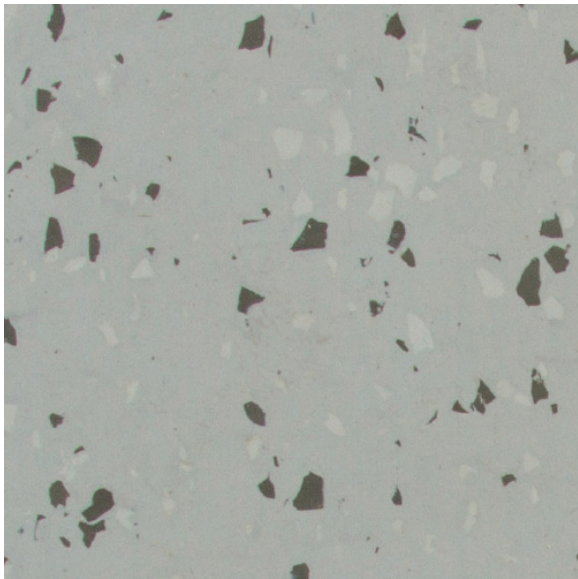
CHIP COLORS (TILE & TREAD)



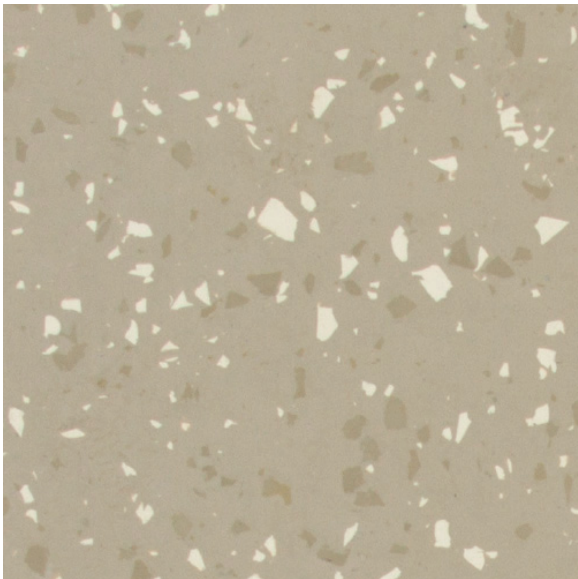
80N Oatmeal



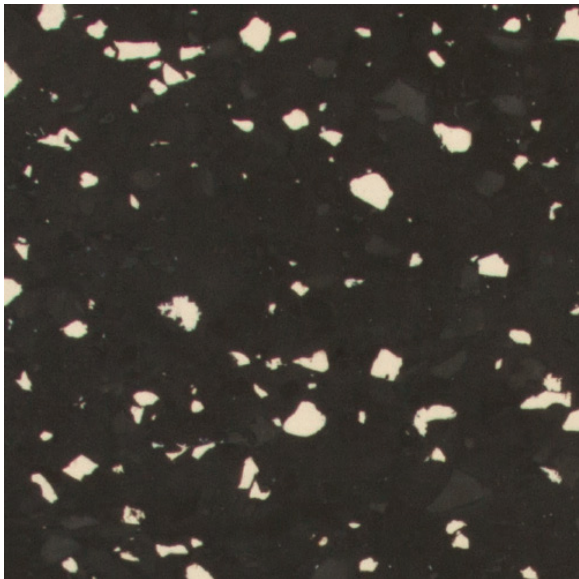
81N Sky Shot



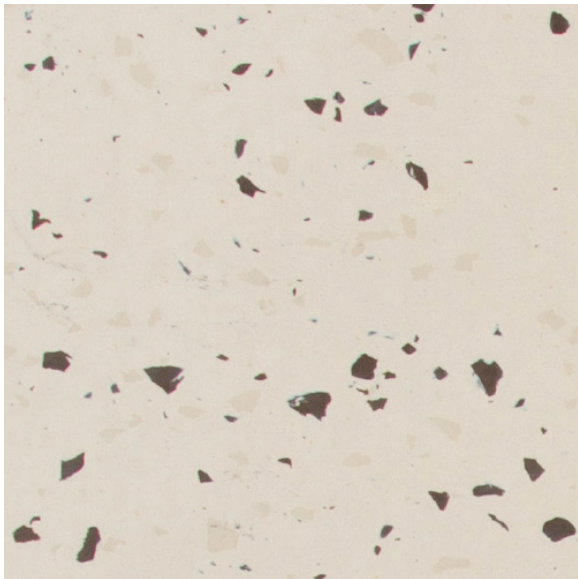
82N Cinder Block



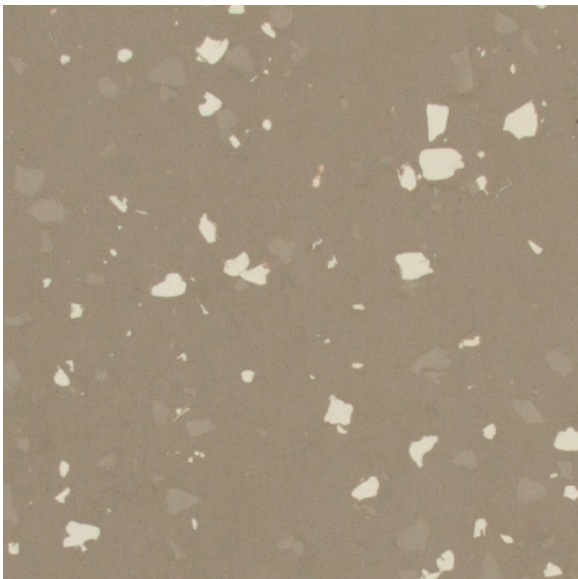
83N Neutral Desert



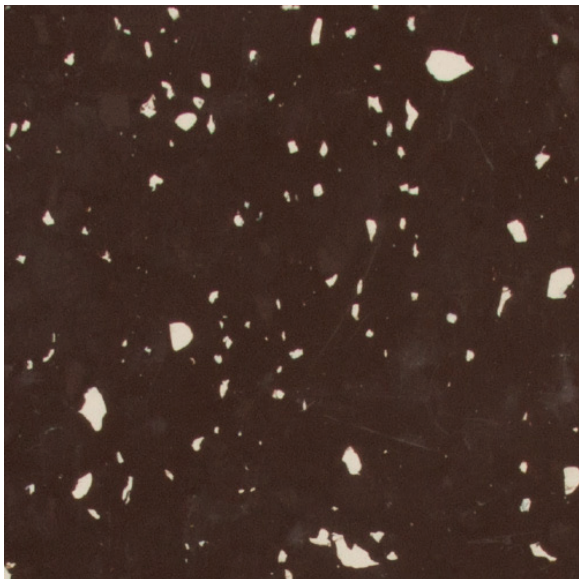
84N Burnt Toast



85N Sand Dune



86N Portabello



87N Chocolate Chip

ASTM & TECHNICAL
Visit procedoflooring.com
for the most current
technical documents
and information.



1401 East 6th Street
Tuscumbia, AL 35674
Phone: 866.955.8291
Fax: 419.436.4302

procedoflooring.com

Availability

Products are available for purchase directly from Procedo Flooring at (866) 955-8291. Procedo products are represented by a local representative. Please call Procedo Customer Service to find your local Procedo Sales Representative.

Samples

Available by request at procedoflooring.com, contacting Procedo's Customer Service Department, or your Procedo Flooring Sales Representative.



rubber + vinyl complementary Accessories

TILE &
TREAD

WALL BASE &
ACCESSORIES

ARTISAN
BASE

